

Technical Advisory Council Quarter 4 Meeting

Integrated Climate Adaptation and Resiliency Program

October 24, 2025, 9:30am



CA Governor's Office of
**Land Use and
Climate Innovation**

Agenda

1. Roll Call & Housekeeping
2. Approval of Draft Meeting Minutes
3. Welcome and Land Acknowledgement
4. Project Spotlights
5. Partnerships to Drive Action
6. General Public Comment
7. Next Steps and Logistics
- Lunch Break
8. Allensworth Community Center and Garden
8123 Ave 36, Allensworth CA 93219
2 – 3:30 pm
9. Arsenic Water Treatment Lab
8064 Ave 28, Allensworth CA 93219
3:30 – 4pm
10. Closing and Meeting Adjourned



Item 1 | Roll Call & Housekeeping



San Francisco Office of
the Auditor-Controller
Financial Transparency

Zoom Support

- For virtual attendees, technical support and other questions can be asked in the Q&A function on Zoom.
- You can also reach Sam Magill by email for technical support:
s.magill@csus.edu



Item 3 | Welcome



CA Governor's Office of
**Land Use and
Climate Innovation**

Item 2 | Approval of Draft Meeting Minutes



San Francisco Office of
the Auditor-Controller
Financial Transparency

Item 2 | Public Comment



Department of
Public Works
Public Works Department

ACTION

**Approve the meeting minutes
from the ICARP Technical
Advisory Council 2nd Quarter
Meeting on May 16th, 2025.**



Item 4 | Project Spotlights



Commonwealth Office of
Asset Management and
Infrastructure Development



ICARP Presentation

Allensworth Progressive Association | October 24, 2025

Allensworth Progressive Association

Serving the Community of Allensworth, Ca.



- Allensworth – the only California town, founded, financed, and governed by Black people
- Allensworth Progressive Association (APA) – original governing body, re-established in 1997 as a 501c3 to revitalize and formalize community development efforts
- APA Today – re-constituted into an organized, multi-racial, multi-generational collective focused on environmental and health issues plaguing rural communities of color
- Started as all-volunteer organization with no employees and minimal funding
 - 10 employees
 - Infrastructure
 - Community Action Committee (CAC)
 - Consultant and Partner Organizations
- Allensworth Alliance
 - Allensworth Progressive Association (APA)
 - Allensworth Community Services District (ACSD)
 - Allensworth Elementary School District (AESD)
 - Friends of Allensworth (FOA)
 - Allensworth Community Development Corporation (ACDC)

Allensworth Progressive Association- Challenges and Priorities

Serving the Community of Allensworth, Ca.



- The Challenges
 - Extreme and Disruptive Weather Events (Heat, Drought, Flooding)
 - Food and Water Insecurity
 - Lack of economic opportunities
 - Capacity to support project implementation
- The Priorities
 - Civic and Resiliency Center
 - Farm Enterprise Projects
 - Food and Water Security
 - Community Advocacy and Action

AI

WHOLE



Greater than the Sum





Community Plan

Allensworth, Ca.

Dezaraye Bagalayos
APA Associate Executive Director

Allensworth Community Plan Update

Mapping the Path Forward



[Link to Allensworth
Community Plan](#)

- **2017** – The Allensworth Hamlet Plan is produced by Tulare County
- **2021**- Community outreach efforts begin for Allensworth Community Plan (ACP) with a focus on climate resiliency
- **2022** - ACP update framework approved unanimously by Tulare County Board of Supervisors
- **2023 - 2024** – Community outreach and engagement efforts continue. Dr. Alison Hirsch (USC) brought on to develop ACP framework into a comprehensive plan
- **Jan 2025** – ACP Draft completed. Edits and comments collected. Executive Summary started.
- **May 2025** – Executive summary completed and translated, last round of community outreach conducted. ACP Submitted to Tulare County!



Allensworth Community Plan

ACP Planning Priorities

1. Achieving Rural Self-Sufficiency
2. Public Health and Safety / Community well-being
3. Climate Resilience
4. Environmental Justice
5. Educational Advancement
6. Economic Development
7. Regenerative Agriculture & Food Security
8. Eco, Agro and Cultural Tourism
9. Ecosystem Health
10. Environmental Resource Management and Infrastructural Security
11. Water Security
12. Community Infrastructure & Public Facilities
13. Energy Sovereignty
14. Affordable Housing and Anti-Displacement Regulation
15. Place-Sensitive Art, Architectural and Landscape Design and Town Planning





Allensworth & the
Tulare Lakebed
Ground Zero for Climate Change in
the Central Valley of California



Building Community from Within

5 – 11 yrs



12 – 18 yrs



18 yrs+



Arts & Athletics Based Learning Program [A²BL]

- Allensworth Running Club
- Increase in participation YoY
- After School Program
- Multiple Art Vehicles
- Multiple Sports
- Parlay Arts Consortium MOU
- Promote Family Participation
- Year-Round Programming

Tulare Lake Project Based Learning Program [PBL]

- Celebrating 9+ Years!
- Partnership with SEEN
- Climate Change Focused
- Middle School/HS Age Program
- Build Awareness
- Stipend Offered via Partner Orgs
- 4-Week Summer Program

Explorer Program * Beg Farmer Training Program [BFTP]

- CLBL Model
- CDFA Lessons Learned
- ID Challenges
- Solution –lower point of entry, shorter offering, student-centric, farmworker-centric
- Year-Round

Community Action Committee [CAC] * APA * Workshops

- Subcommittees
- Leadership Incubator
- Inform – Educate – Implement
- Build Resiliency
- Year-Round
- Direct Employment
- Workshop Participation



Agroecology Hub

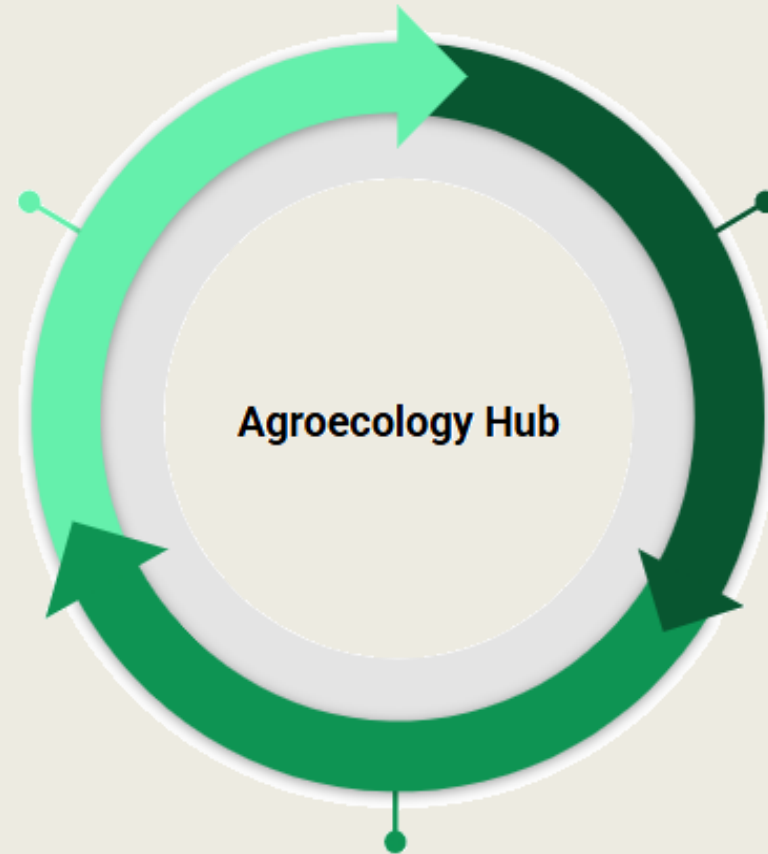
Health is Wealth Model

Jose Armando Munguia
Project Manager – Agriculture Enterprise Development

Agroecology Hub Model



Regenerative Agriculture
Food growing practices to
build soil and clean food



Farm Enterprise
Food production, animal
integration and value added
products

Community Engagement
Jobs, Workforce
development, Education



Regenerative Agriculture		Tool	Vision	Benefits
1	Environment	×	✓	<ul style="list-style-type: none">• Reverse greenhouse gas emissions• A relationship between humans, crops, animals, and ecosystems• Recharge groundwater & improve air quality
2	Food System	×	✓	<ul style="list-style-type: none">• Dedicated food system for local residents• Food year round• High quality, nutrient dense food
3	Economic	×	✓	<ul style="list-style-type: none">• Local jobs and ownership• Circular economy• Industry and workforce development



Diversified Food Growing System Resilient to Climate Extremes



Tree Integration System Agroforestry and silvopasture	Compost and Organic Wastewater Program	Soil Health Practices
Wildlife- friendly Food System	Surface Water and Drainage System	Agroecology Practices
Agrotourism	Farm Stand	Kitchen and Restaurant



Agrivoltaics

Farming the Sun for Food & Electricity

Jose Armando Munguia
Project Manager – Agriculture Enterprise Development

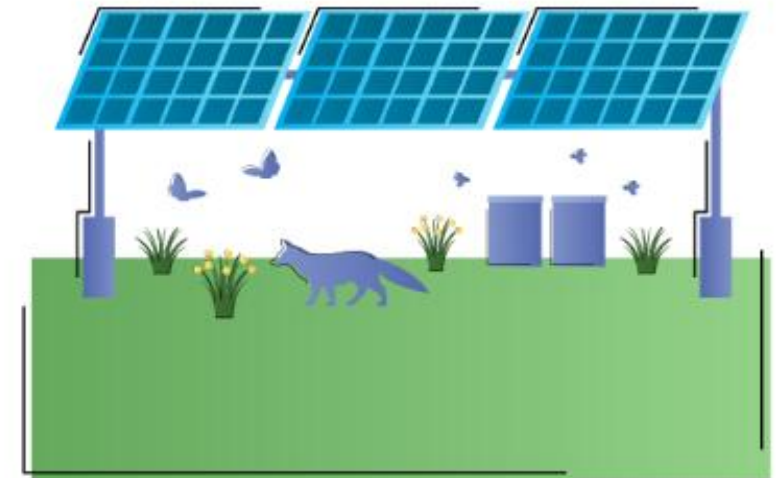
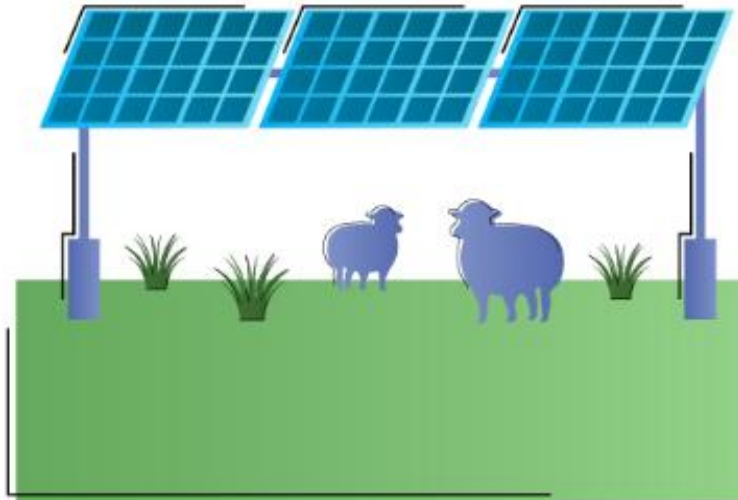
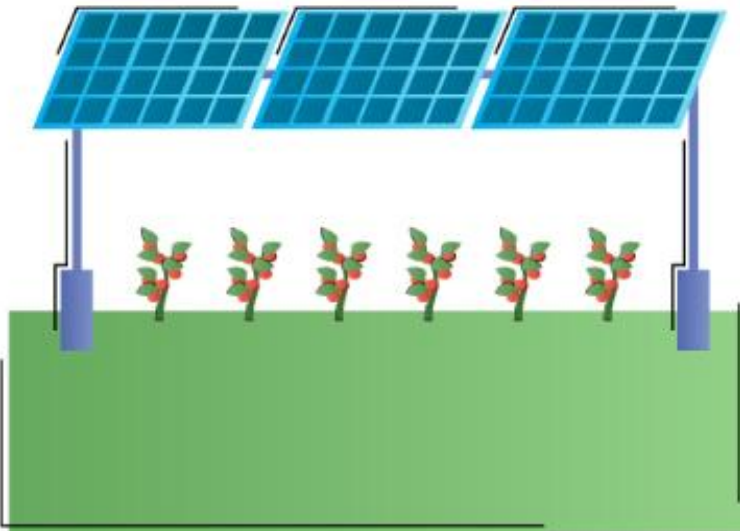
Renewable Energy Enhancing Agriculture and Habitat



Agriculture & solar

Livestock & solar

Habitat & solar



Allensworth Food and Energy Sovereignty



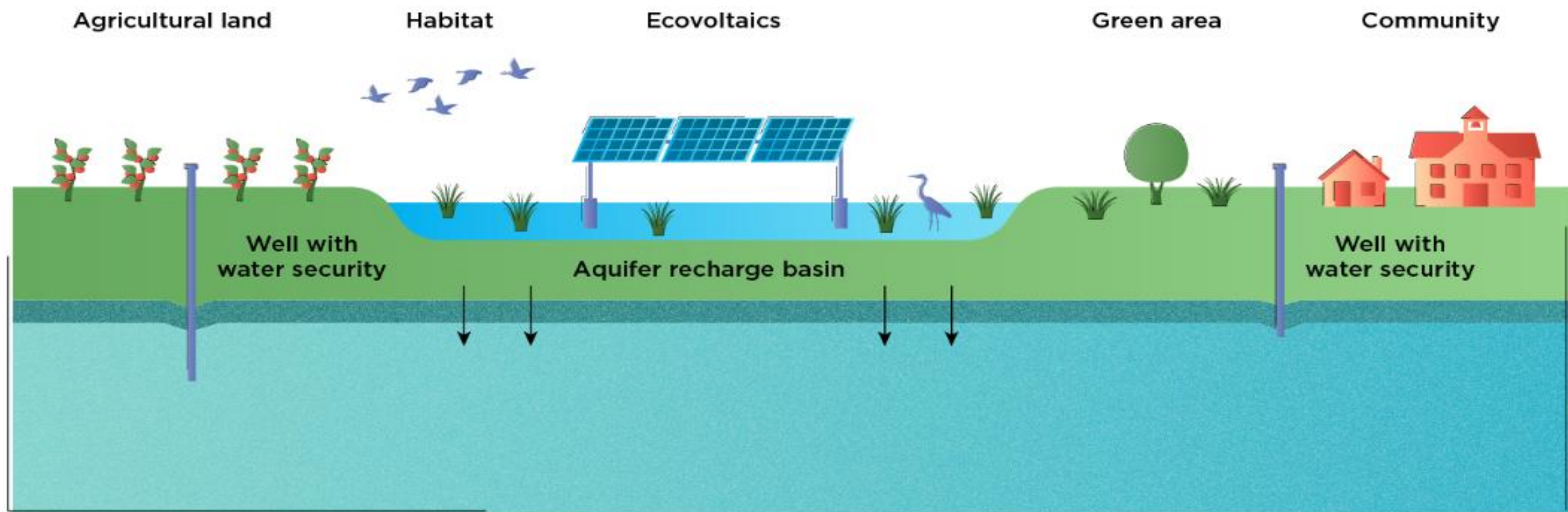
- **Energy Vulnerable**

- Inconsistent energy flow – causing damage
- Brownouts and Black Outs
- No Power, No Water
- Extractive: Increasing Energy Costs

- **Energy Secure**

- Locally controlled and operating system
- Reduction of energy costs for residents and farm enterprise
- Provide revenue for the community

Multi-benefit Managed Aquifer Recharge with Ecovoltaics and Recreation





Tekoah Kadara
APA Associate Executive Director

CIVIC & RESILIENCY CENTER

PROJECT OVERVIEW & UPDATE



ALLENSWORTH COMMUNITY RESILIENCE CENTER

Dyson Architects, Inc.
1295 N Wishon Ave, Suite 101
Fresno, CA 93728
Ph: 559.497.6370
Web: dysonjanzen.com



CIVIC & RESILIENCY CENTER

VISION

- Medical Center
- Heating & Cooling Center
- Restaurant/ Commercial Kitchen
- Cottage Store
- Postal Services
- APA / ACSD / Public Servant Offices
- Computer Lab/ Homework room
- Water Kiosks (arsenic water remediation technology)
- Retail Space



Civic & Resiliency Center Timeline

[LINK TO CIVIC
CENTER ONE PAGER](#)

PROJECT PARTNERS

- Self Help Enterprises
- Dyson Architects
- Family Healthcare Network

CAPITAL STACK

- \$8.25M Construction
- \$980K Pre-Dev Costs
- \$145K Mgmt Costs
- **\$10.3M Total Costs**
- (\$1.6M CNRA Grant)
- \$8.5M Funding Gap

FUNDING OPPORTUNITIES

- Econ Dev Admin Grant
- SGC CRC Grant
- Securities Based LOC
- Asset based or Cash Flow Financing
- Philanthropy
- Other Catalytic Capital

Target Period

Milestone / Focus

Oct – Dec 2025

Decide on existing building (demo or move); complete FHCN hazardous materials form; GC Cost Estimates; finalize GC conceptual budget breakout

APA → Transition Plan for Community Center Operations

Jan – June 2026

Prepare and submit CRC Implementation Grant application (NOFO expected Spring/Summer 2026).

APA → Finalize Civic & Resiliency Center Capital Plan 9064 sf

APA → Implement Transition Plan / Relocate Community Center Operations

APA → Formalize MOU and lease terms with FHCN

July – Dec 2026

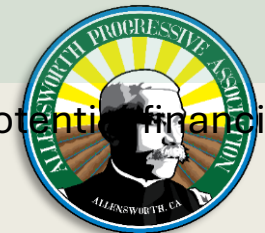
Explore NMTC and APA alternate funding options; complete predevelopment and permitting; fully expend CRNA funds by December 2026

APA → Implement Phase 2

Jan – June 2027

CRC award announcements; NMTC structuring and potential financial closing

APA → Implement Phase 3



Allensworth *plus one*



- Community Partnerships and Advocacy
- Organizational Partnerships
- Tribal Partnerships
- Private Partnerships and Collaboration
- County of Tulare Partnerships
- State Agency Partnerships

Tekoah Kadara
APA Associate Executive Director

Looking Forward

The Five “S”s of Allensworth



- Solidarity
- Self-determination
- Stewardship
- Sustainability
- Sovereignty

Tekoah Kadara
APA Associate Executive Director

Item 4 | Discussion



CA Governor's Office of
**Land Use and
Climate Innovation**

Item 5 | Partnerships to Drive Action



CA Governor's Office of
Land Use and
Climate Innovation

Community-Led Resilience in Allensworth, CA

Connection. Compassion. Community.

A story of local strength & shared commitment.

They didn't wait for help – they became it.

Our Focus Today

Show how Allensworth turned crisis into connection.



Share what makes this model work – and why it matters.



Highlight what community-led resilience looks like in action.



**American
Red Cross**

How We Serve



The American Red Cross helps communities **prepare for, respond to and recover from emergencies.**



The Red Cross responds to about **65,000 disasters** every year.



Every two seconds, someone in the U.S. needs blood.



Volunteers are the lifeblood of the Red Cross. 90% of our workforce is volunteers.

The Community Adaptation Program (CAP)

- Focuses on three pillars: Hunger, Health, and Housing.
- Hyper-Local
- Hyper-Relational
- Asset Based Community Mobilization





The Story of Allensworth and the American Red Cross

The story of Allensworth

- Historic Roots
- Self-Determination
- Spring Floods (2023)
- Facing the Unknown
- United in Isolation



It began with a small team and a bold dream in Allensworth—a historic town rooted in self-determination. Neighbors there had weathered many hard seasons, but in the spring of 2023, they faced something different. Something that tested not just their resilience, but the very fabric of their community.



When floodwaters surrounded Allensworth and nearly turned it into an island, the town was forced into action. Roads vanished beneath rising currents, and essentials became nearly impossible to deliver. But before any outside help could arrive, the community did what it had always done—neighbors organized, checked on one another, and made do with what they had. In the face of isolation, they chose connection.



Our team reached them because of a single phone call—from State Senator Melissa Hurtado’s office, asking for support. This was before any formal partnership, before there was a 'Community Adaptation Program.' That moment revealed two truths: the community’s vulnerability and its extraordinary capacity to act under pressure

Turning Strength into Strategy

- Joined CAP
- Focused on community priorities
- Invested in APA's capacity, capability, and continuity



Several months later, APA joined the new Community Adaptation Program (CAP), building on the vision the community had already set in motion. Together, they focused on what residents had been asking for: turning local priorities into shared action

**The goal wasn't to change
Allensworth—it was to reinforce the
strength it already carried.**



What We Built Together

- Trainings
- Resources
- Community Engagement

and more!



Because of that, the community center now offers shaded cooling areas, solar-powered workstations, a backup generator to stay open during blackouts, cold storage, a community stove, and a community vehicle, emergency storage, and a disaster classroom. Because of that, volunteers and staff are trained in CPR and First Aid, and residents have received emergency preparedness training, wildfire safety education, shelter drill practice, and more!

A Culture of Preparedness

- Everyday Readiness
- Intergenerational Resilience
- *Land & Community Began to Heal*



Until finally, the same community members who were once impacted or displaced now lead readiness efforts in their own town. Allensworth has become a living model of resilience—proof that preparedness takes root when it becomes part of everyday life.

Shared Commitment. Shared Impact.

- Community Leadership
- Generosity of our Donors
- State Partnership



Wildfire Readiness Expo

“Families didn’t just leave with resources. They left feeling seen and supported. That’s what made the event so powerful. It was beautiful, emotional and *absolutely necessary*. We have to do this again next year.”

- Goana Toscano





**American
Red Cross**

Community Adaptation
Program



Thank you!

Margarita Moreno

Community Disaster Risk Reduction
Manager - Tulare County, CA

margarita.moreno@redcross.org |

Mobile (559) 378-4461 |

Disaster Cycle Services | **Community
Adaptation** | American Red Cross

www.redcross.org



Barbara Brydolf

**CNPS Alta Peak
Chapter**

SJV PIN

30 x 30 POWER IN NATURE

PROTECTING CALIFORNIA TOGETHER

Power in Nature is a community-driven initiative to protect 30% of California's lands and coastal waters by **2030**.

Allensworth Progressive Assn. is a member of the coalition



CALIFORNIA
NATIVE PLANT
SOCIETY



30x30

conserve 30% of our lands and coastal waters by 2030 to **stem biodiversity loss and protect people and nature in the face of accelerating climate change.**

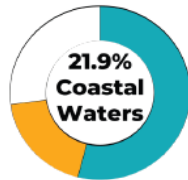
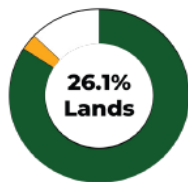
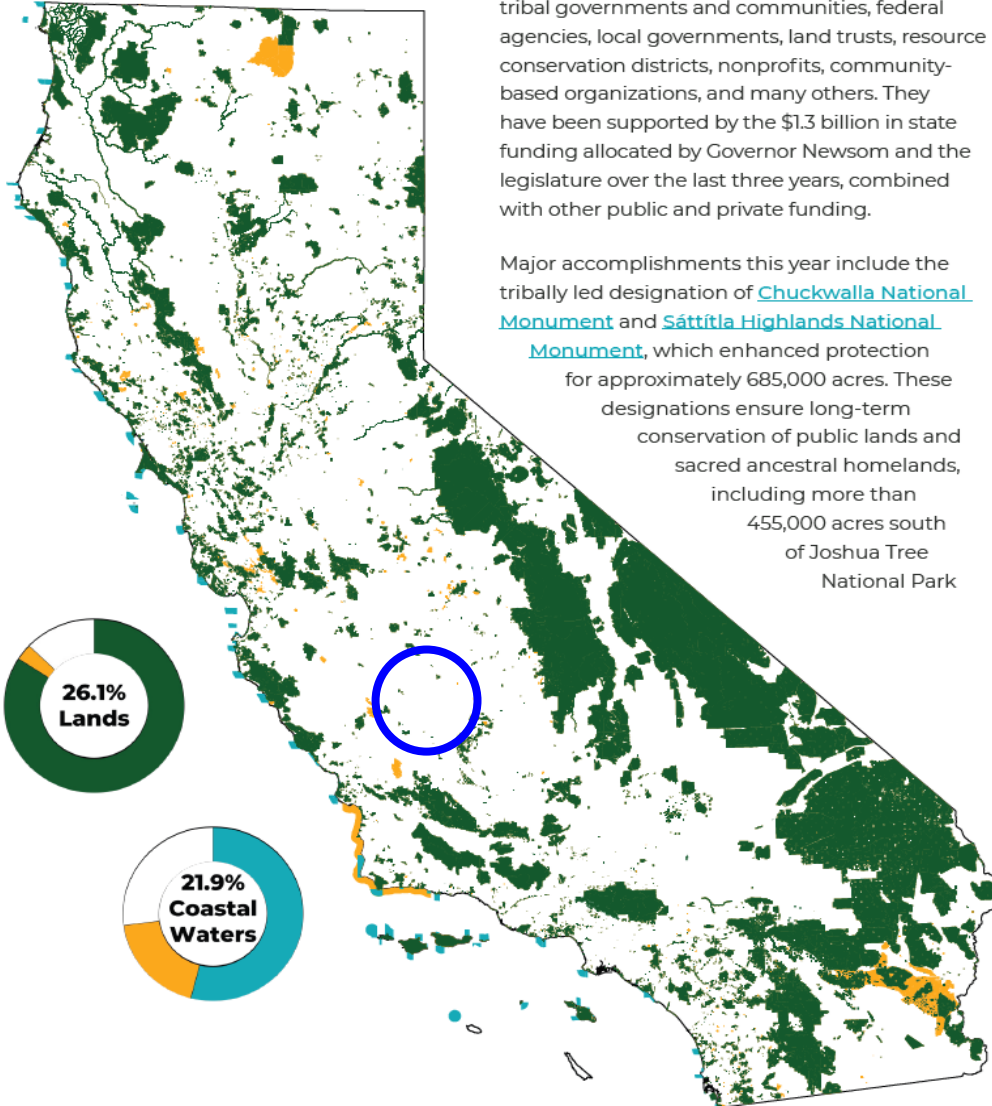
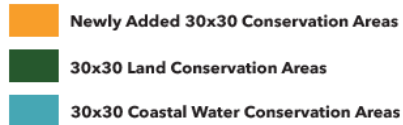
2020: **Governor's Executive Order N-82-20**

2021 **Biden Executive Order** on 30x30 (America the Beautiful, page now removed)

2022: **COP15**

2023: State's commitment to 30x30 was signed into law via **Senate Bill 337**

Conserved Lands and Coastal Waters

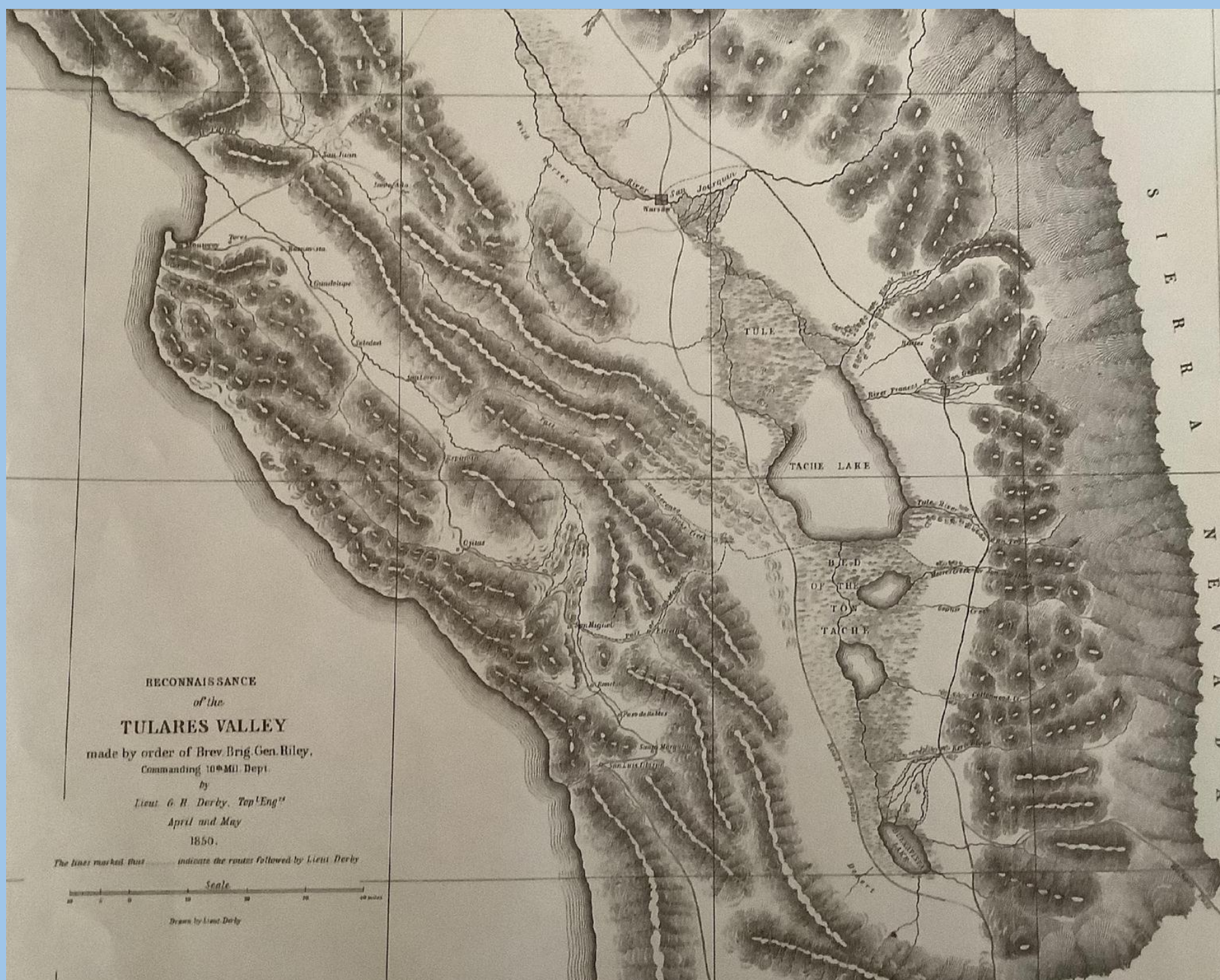


30x30 Conservation Areas are added through strategies identified in the 10 Pathways, which can lead to acquisitions and easements, permanent protections, management improvements, and/or data enhancements.

These successes are a result of the hard work of tribal governments and communities, federal agencies, local governments, land trusts, resource conservation districts, nonprofits, community-based organizations, and many others. They have been supported by the \$1.3 billion in state funding allocated by Governor Newsom and the legislature over the last three years, combined with other public and private funding.

Major accomplishments this year include the tribally led designation of [Chuckwalla National Monument](#) and [Sattitla Highlands National Monument](#), which enhanced protection for approximately 685,000 acres. These designations ensure long-term conservation of public lands and sacred ancestral homelands, including more than 455,000 acres south of Joshua Tree National Park

30x30 Conserved Lands (circle is Tulare Lake Basin)



Tulare
Lake
(Pa'ashi) -

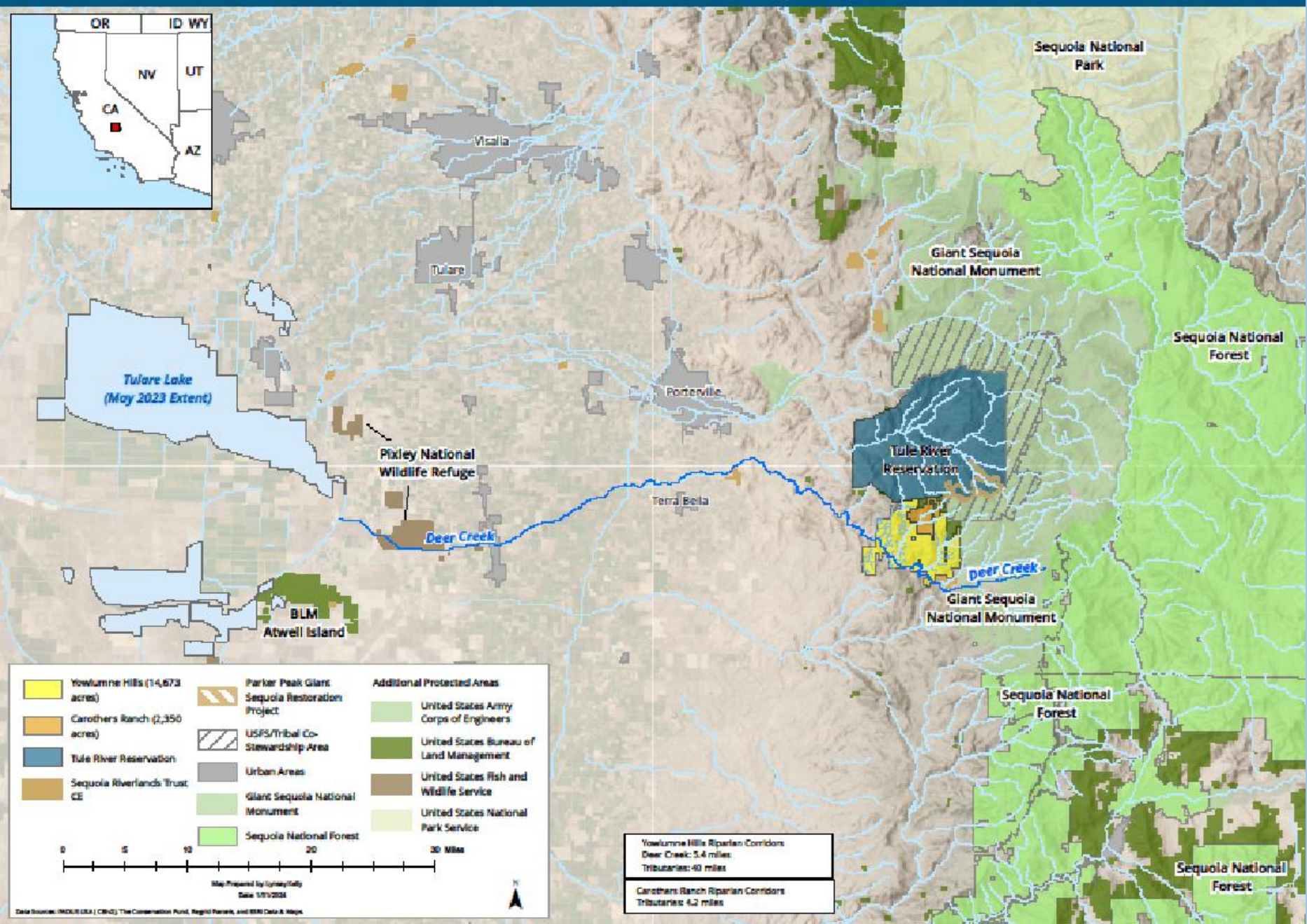
the largest
freshwater
lake west
of the
Mississippi
River

California's Critically Overdrafted Groundwater Basins



The Tule Subbasin's groundwater is critically overdrafted. Its Groundwater Sustainability Plan has been deemed inadequate and it is a candidate for probation.

Reconnecting a Cultural and Ecological Landscape



Tule River Indian Tribe

Yowlumne Hills
Land Back
~ 17,000 ac

Qualifies for 30x30

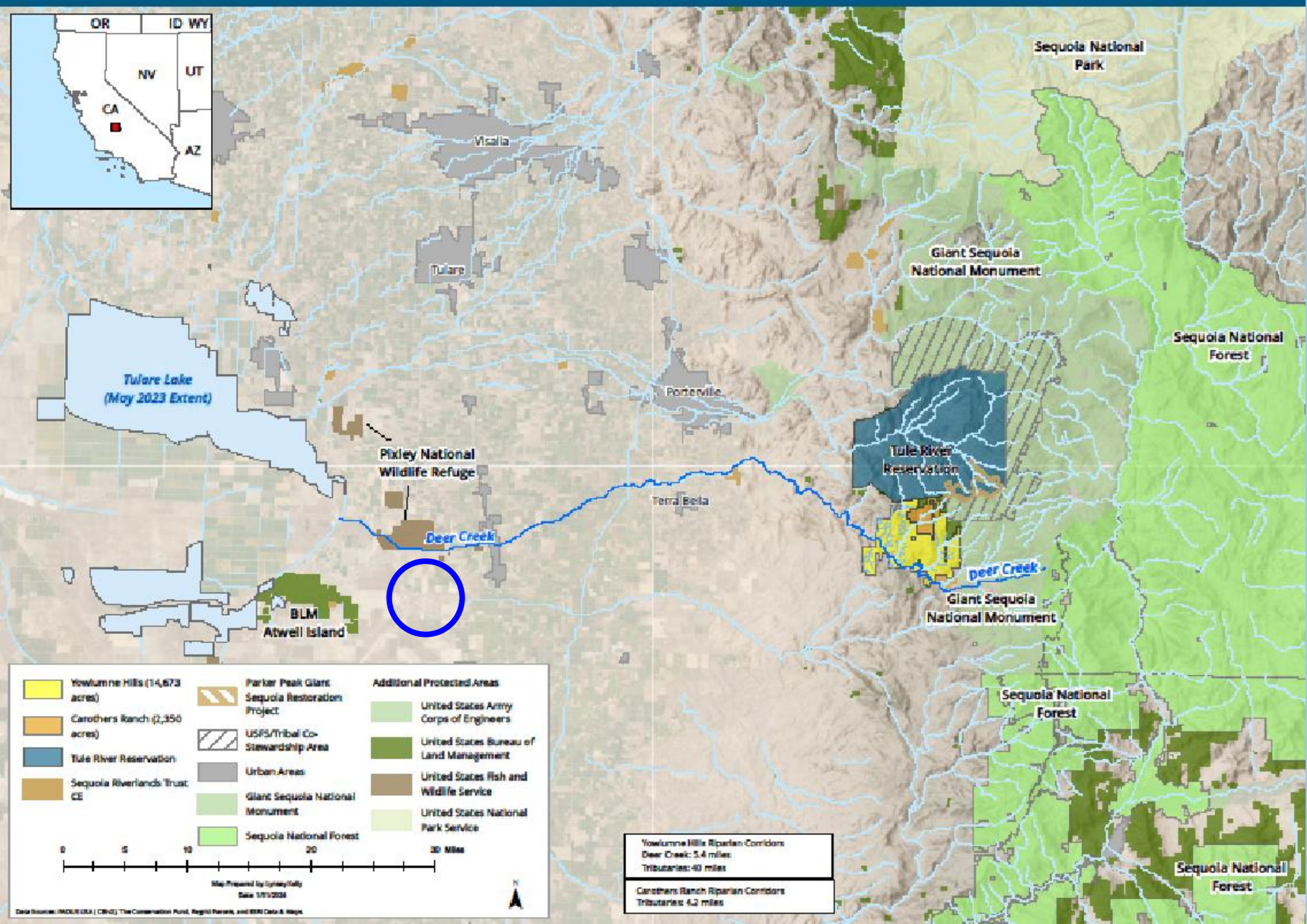
To be managed for
habitat and
biodiversity.





But it isn't all
great...

Reconnecting a Cultural and Ecological Landscape



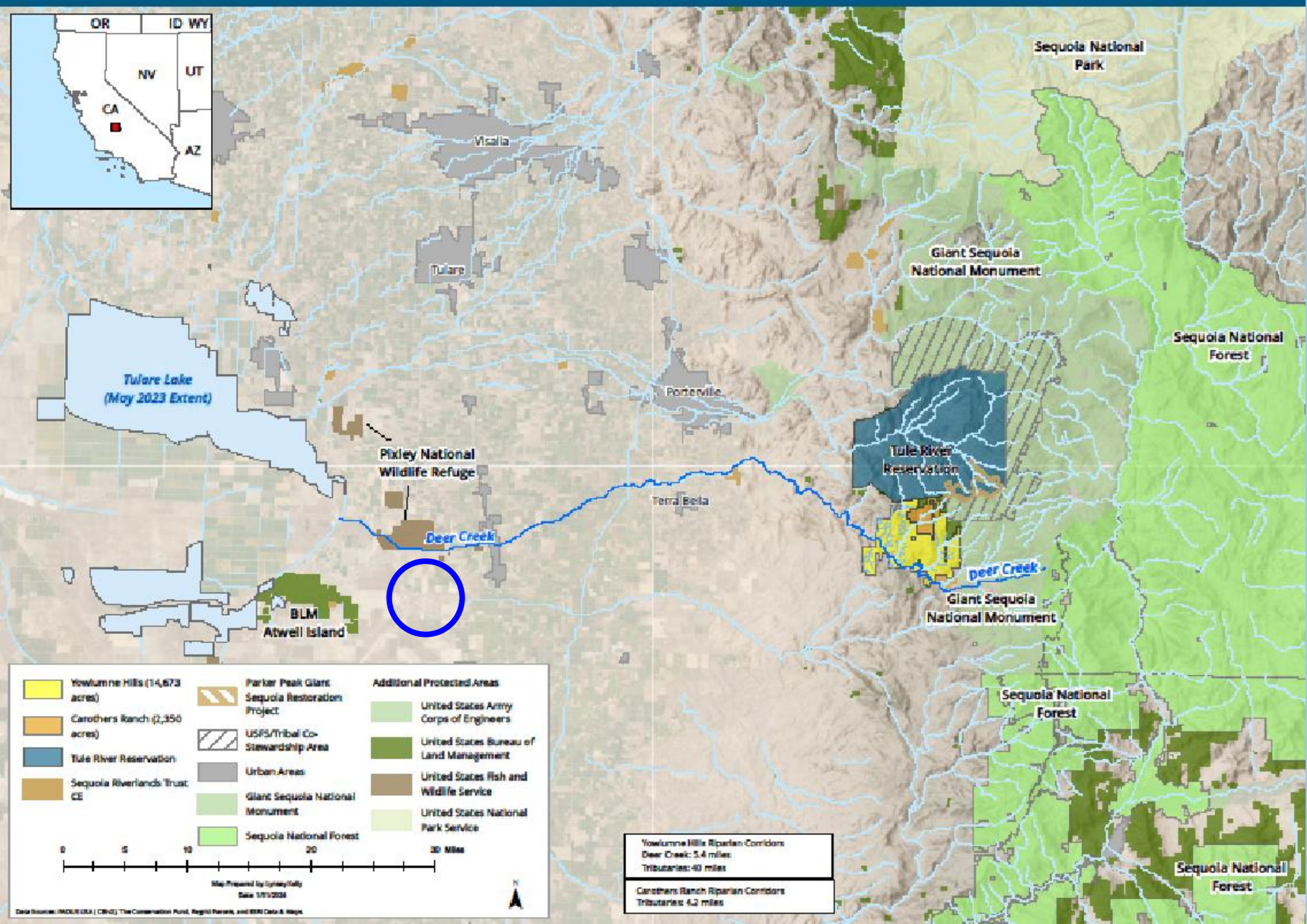
How does this affect Allensworth?

A photograph of a flooded landscape. A dirt road runs along the left side of the frame, with several utility poles and power lines extending into the distance. The road is partially submerged in water, and the water reflects the sky. The sky is blue with scattered white clouds. In the background, a distant shoreline with some buildings and trees is visible.

Remember this?

September
2023

Reconnecting a Cultural and Ecological Landscape



Allensworth is directly downstream of the Deer Creek and White River watersheds



Yowlumni Hills Benefits to Allensworth

Conservation and Watershed Restoration of Yowlumni Hills will help Allensworth in the following ways:

- increase groundwater recharge
- increase groundwater quality
- reduce flood risk
- reduce number of dry wells
- reduce ground subsidence

Groundwater recharge is most effective in the upper watershed.

Thank You



REGIONAL COLLABORATION FOR CONSERVATION

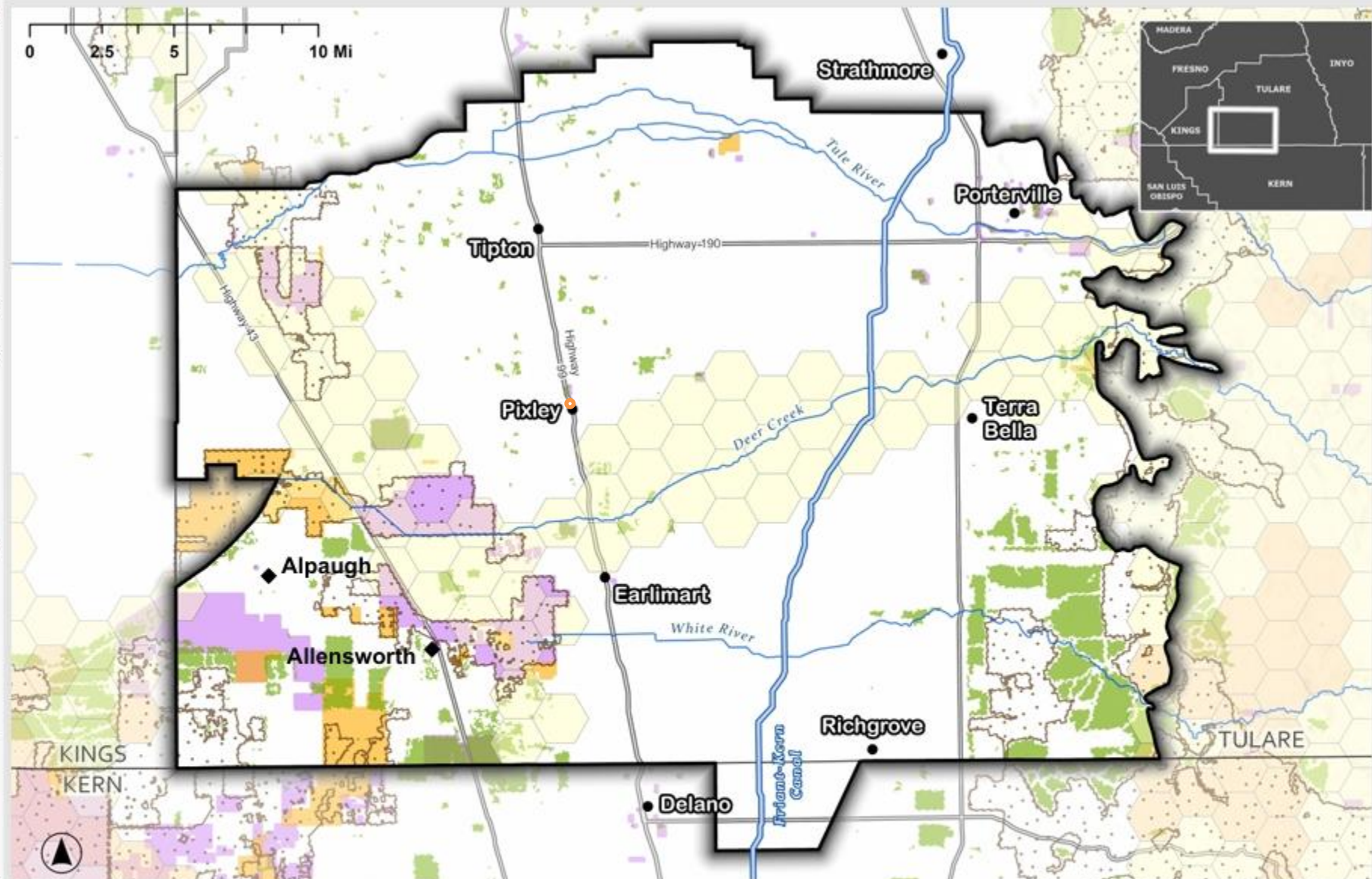
Challenges and Solutions

ICARP Technical Advisory Commission

October 24, 2025



Kathy Wood McLaughlin



Tule Subbasin Natural Communities

Essential Connectivity Mapping*
Connectivity Rank

- 5 - Irreplaceable and Essential Corridors
- 4 - Conservation Planning Linkages

*Connectivity Ranks 4-5 selected out for purposes of this map. Original data includes ranks from 1-5. See appendix for more information.

- Natural Landscape Blocks
- Small Natural Areas
- CA Protected Areas
- CA Conservation Easements
- Friant-Kern Canal



This plan was developed with funds through the California Strategic Growth Council's Sustainable Agricultural Lands Conservation Program (SALC) in collaboration with the Department of Conservation. SALC is part of California Climate Investments, a statewide initiative that puts billions of Cap-and-Trade dollars to work reducing greenhouse gas emissions, strengthening the economy, and improving public health and the environment — particularly in disadvantaged communities.

Data sources: CA-NRA, DEE, COPAC, TNC/US, CA-DWR, CA-DOC, USFWS, DOI, NPS, USDA, USGS

Tulare Basin Wildlife Partners



- ▣ Tulare Basin Working Group
- ▣ Measure C
- ▣ Green Print
- ▣ IRWMP
- ▣ DOC Watershed Coordinator
- ▣ Watershed Initiative

Roundtables & Watershed Initiative Outcomes

- ▣ Flood Risk Management –
 - White River & the Allensworth ER rehabilitation and flood control
- ▣ Habitat protection, restoration and connectivity
 - Deer Creek Riparian Corridor, Atwell Island/Ton Tachi Wetlands
 - University of California Natural Reserve in the Tulare Basin
- ▣ Connectivity between communities
 - The Triple A trail – between Allensworth, Alpaugh and Atwell Island

White River Flood Challenges

- ▣ Allensworth Ecological Reserve
- ▣ Upstream of Community
- ▣ Tri-County Water Authority
FEMA/OES Flood Mitigation
Assistance Grant - Building
Resilient Infrastructure &
Communities (BRIC)



Connectivity & Ton Tachi Wetlands

Habitat for wetland
dependent endangered
species such as the tri-
colored blackbird and
Buena Vista shrew.

Resource for Tachi Yokut.

Triple A Trail Destination



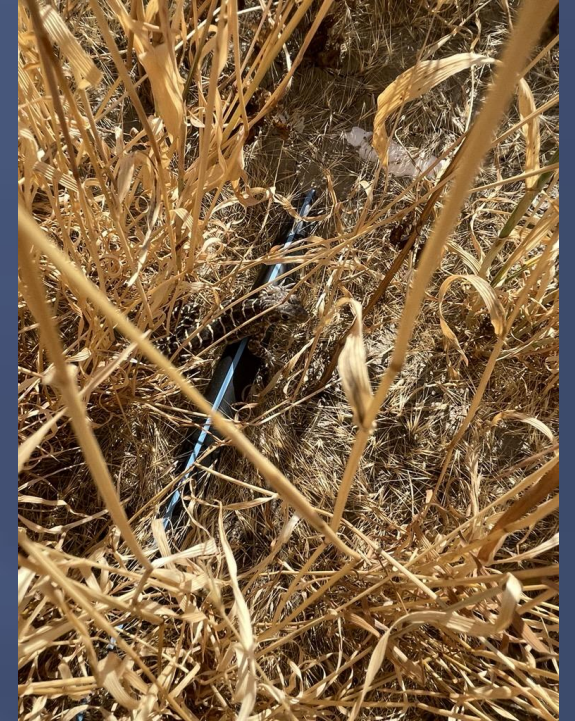
Multi-benefit Projects

- ▣ Lower Deer Creek Watershed Planning with NRCS
 - Acquisition and restoration of Capinero Creek
 - Creation of the Tule Basin Land & Water Conservation Trust
 - Addressing SGMA impacts on irrigated agriculture

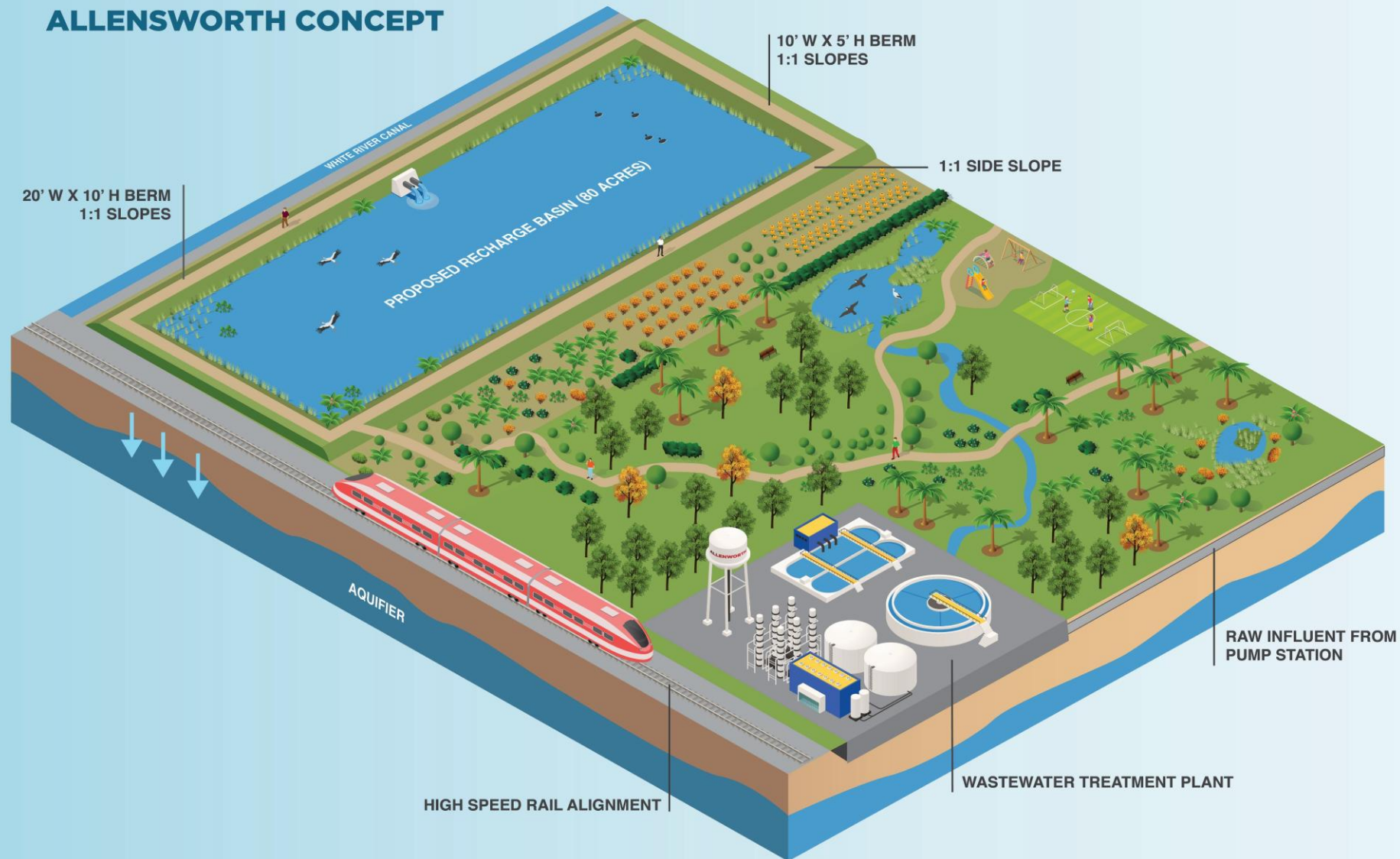
- ▣ MLRP Block Grant – TCWA/ Allensworth Partnership
 - Tri-County Water Authority Water Security Project with Allensworth
 - Conceptual drawings and feasibility study
 - Hydrology & Hydraulic Study on the White River & Deer Creek

Capinero Creek Restoration

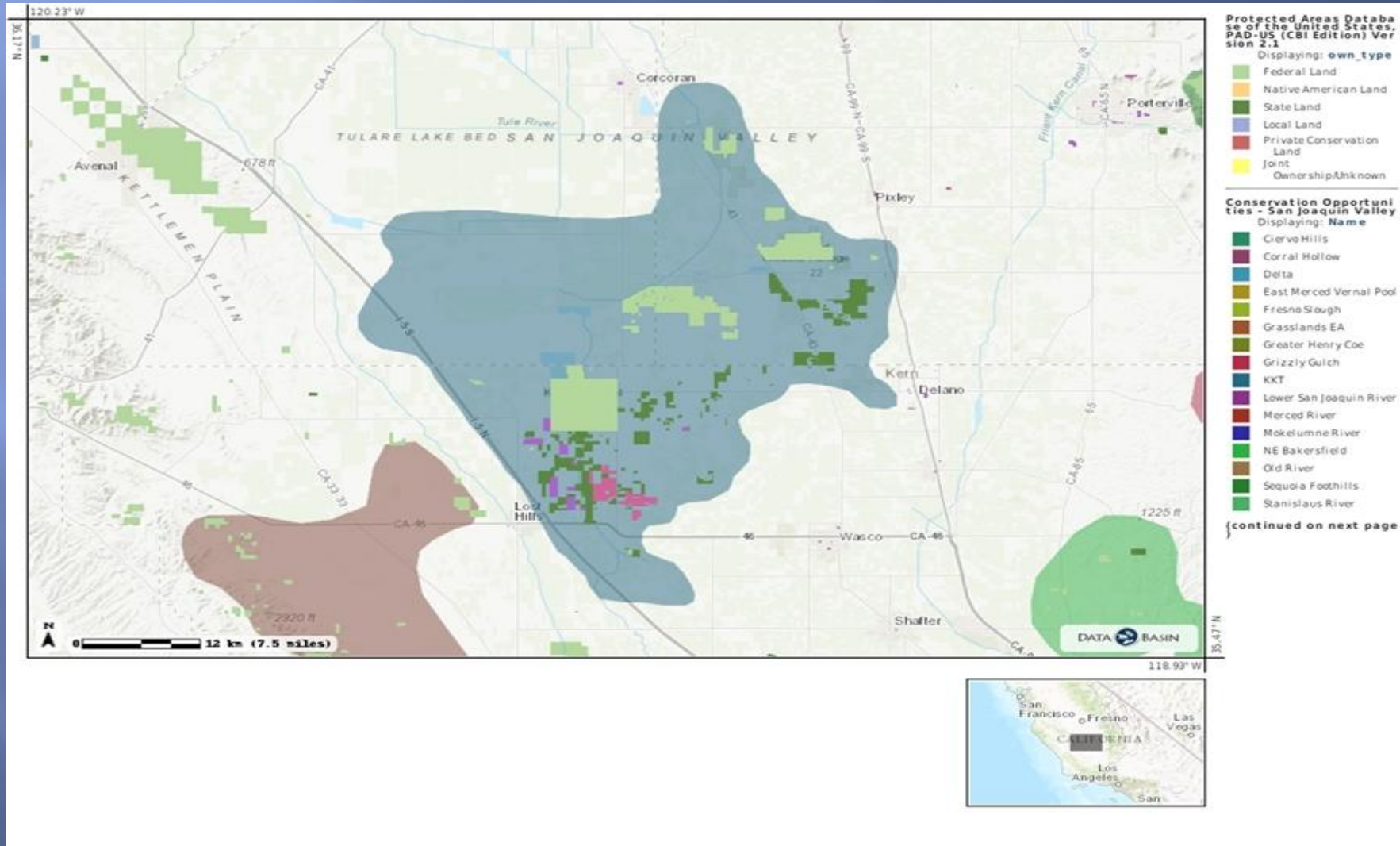
A model for the Region



Multi-Benefit Land Repurposing



Watershed Coalition & the Conservation Crescent



-Regional Conservation Collaborative



Item 5 | Discussion



CA Governor's Office of
**Land Use and
Climate Innovation**

Item 6 | General Public Comment



San Francisco Office of
the Auditor-Controller
Financial Transparency

Item 7 | Next Steps and Logistics



CA Governor's Office of
Land Use and
Climate Innovation

Thank You for Joining!

CONTACT

icarp@opr.ca.gov

Newsletter and more:
lci.ca.gov/climate/icarp



STAY CONNECTED



@Cal_LCI



Governor's Office of Land
Use and Climate
Innovation (LCI)